



SUSPENSION SYSTEM for WORKSTATIONS & VANITIES

Utilizing XGBW—WingIt Fastening System and 1.25" square, 18 Gauge Stainless Steel Tubing

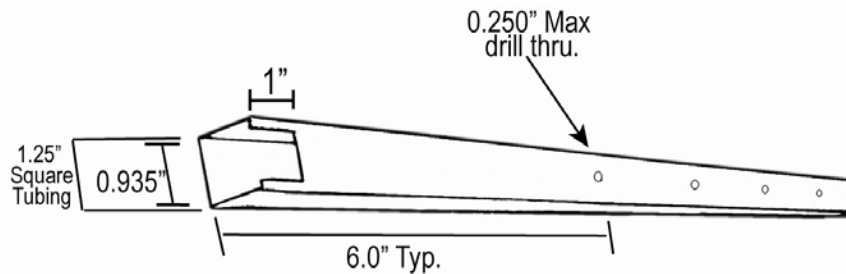
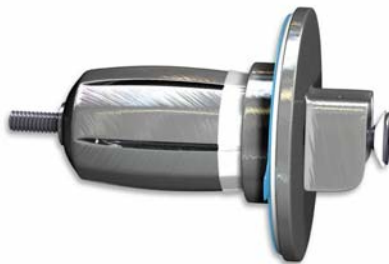


The Vanity System pictured is typical of applications used in TGIFridays® and McDonalds® restaurant chains. Advantages:

- Allows for standardization of countertop sizing as backsplash is eliminated and countertop does not interact with wall.
- Install time dramatically reduced.
- Maintenance greatly reduced—no backsplash or standing water.
- Bull nosed all four sides, rated to 1200#.

SUSPENSION SYSTEM incorporates:

1. Suspension WingIt—Spring Stainless Clip to interlock into Tubing, 3M® Waterproof Tape, WingIt Fastening Technology.
 2. Cover Plate—locks onto Tubing and conceals the WingIt
 3. Stainless Steel Tubing—1.25" Square Tubing, Notched and pre-drilled
- All items 18/8 Stainless Steel



STANDARDIZED SUSPENSION SYSTEM LENGTH—69"

Additional Lengths available and System with tubing sourced locally available, please contact customer service @ 877-894-6448 or via email: sales@wingits.com.

Installation Instructions:

1. Locate points of installation for WingIts.
2. Drill 1 1/4" holes for WingIts, Peel off 3M WATERPROOF Tape Liner and insert WingIts with the flat of the "U" Channel facing up (upside down "U")
3. Unthread the center screw – distance greater than wall thickness. Place screwdriver on the center screw head and "Pop" WingIt through the wall using the palm of your hand.
4. Tighten the screw, first by hand then with a screwdriver.
5. Measure distance between the two WingIts, take the enclosed 1 1/4" square tube (can be trimmed at standard end to desired length—LEAVING THE NOTCHED END INTACT!).
6. Place the newly cut end of the tube over one of the inverted WingIt "U" channels after slipping on the concealing covers—then snap the notched end over the other "U" channel. Make sure the "U" has been totally engaged in the notched channel.
7. Secure the Vanity to the WingIt Rail System through the predrilled holes with the enclosed screws.