



Refined Engineered Safety

GRAB BAR FASTENING SYSTEM

PART # - RESGBW35 - Sold in Sets of 2 (Typical Grab Bar)

The World's Strongest Fastener™

- Meets ADA Guidelines and ALL Building Codes
- Eliminates the need for Blocking - **Watertight**
- Rated up to **600 lbs.** in drywall with tile
- Works with WingIts' Grab Bars

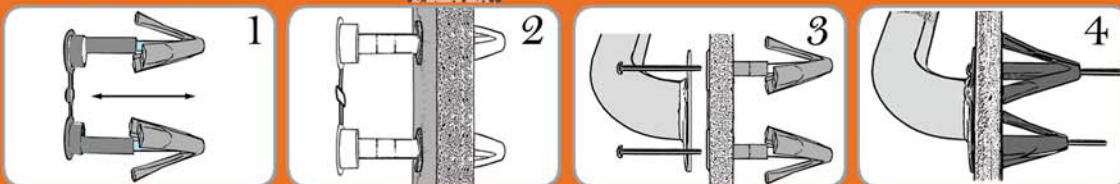


MADE WITH PRIDE IN THE U.S.A.

OVER TWO MILLION
2,000,826
INSTALLED.
 AND STILL COUNTING...

Installs completely **WATERPROOF**
 —even over grout lines!

AS EASY AS ...



- TOOLS REQUIRED:
- Tape Measure to layout
 - 3/4" Drill
 - Phillips Screwdriver

DRILL IT. INSTALL IT. MOUNT IT.

RES WINGITS are easily installed with the APACHE200 3/4" DRILL BIT

Call us at 877.894.6448 • Visit us at www.wingits.com • Email us at sales@wingits.com



REFINED ENGINEERED SAFETY GRAB BAR WINGIT *INSTALLATION GUIDE*

WingIt's Residential Grab Bar Fastening Systems Meet Building Codes for Grab Bars in the Following Wall Substrates:

* 5/8" drywall—painted or wallpapered
* 1/2" or 5/8" drywall with tub surrounds
* 1/2" or 5/8" drywall with tile, marble and all stone
* 1/2" or 5/8" drywall with any panel types including fiberglass, faux marble, acrylic and plastics
* Multiple layers of drywall
* Plaster and lath
* 1/4" acrylic/fiberglass tub surrounds
* Most wall panels
* All masonry type boards, with or without decorative panels

NEVER INSTALL ANY FASTENER INTO WET OR DETERIORATING WALLS!

DO NOT INSTALL WingIts® into BARE 1/2" drywall when attempting to meet commercial building codes.

LOCATION:

To ensure adequate clearance, use a stud finder. Minimum 1" clearance required from centerline of WingIt installation.

TOOLS REQUIRED:

* **Screwdriver & 3/4" Drill** (our APACHE 200 drill bit—rated @ 200 holes in ceramic wall tile)

GRAB BAR LENGTH

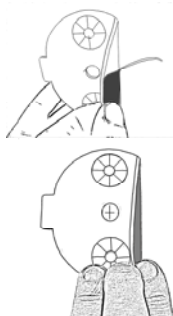
Before you install Verify the length of the grab bar by measuring from the outside of one flange to the inside of the other.



Avoid WALL FRAMING (studs)—One inch clearance needed from Center of each WingIt installation.

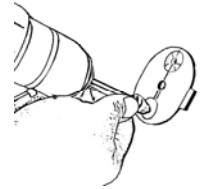
1. PEEL the 1/4" Liner (scored) off the Tape and fold up until properly placed.

2. Determine location of the Grab Bar and mark the length on the wall, then place TAPE with the center hole over mark. Stick



tape to the wall Remove remaining Liner and complete adhesion.

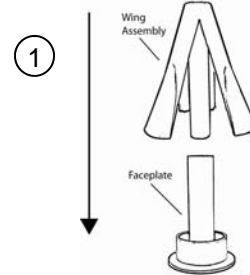
3. Using the Tape as a template, Drill out two 3/4" holes. For a fast, easy installation, use the Apache200 Drill Bit—rated @ 200 holes in ceramic wall tile.



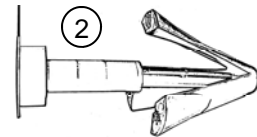
1. Once the holes are drilled, remove TAPE liner



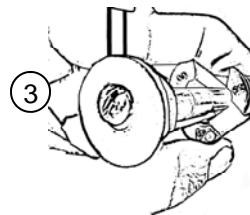
Install RES Grab Bar WingIt



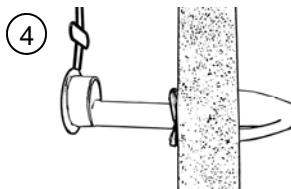
1. Place the FACEPLATE on the table insert the WINGS into the FACEPLATE (the tubes inter-lock).



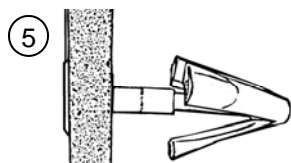
2. Extend the WingIt.



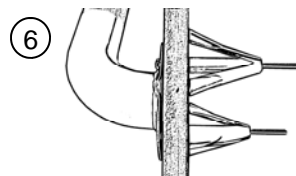
3. Compress and insert the WINGS into the holes.



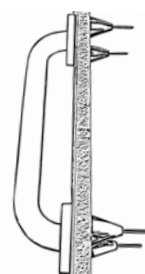
4. WINGS should be FLUSH with the wall surface.



5. Pop WingIt through the hole by pushing on the Faceplate or thread the screw in and push the Wing through.



6. Using the enclosed 3.5" Stainless Steel Screw, Attach the grab bar to the WingIt.



Grab Bar installed with RES Grab Bar WingIts.