



REFINED ENGINEERED SAFETY "RES" GRAB BAR FASTENING SYSTEM

RESGBW35

Sold in Sets of 2
(Installs Typical Grab Bar)



Contents:

- 2—WATERPROOF TAPE DISKS (also used as installation template)
- 2—FACEPLATE ASSEMBLIES (structural, fire retardant plastic—FR110)
- 4—Wings (structural, fire retardant plastic—FR110)
- 4—SCREWS (10-32x3.5" Stainless Steel Truss Head Screws)

RES Grab Bar Fastening System Exceeds Building Codes for Grab Bars in these Wall Substrates:

- * 5/8" drywall—painted or wallpapered
- * 1/2" or 5/8" drywall with tub surrounds
- * 1/2" or 5/8" drywall with tile, marble and all stone
- * 1/2" or 5/8" drywall with any panel types including fiberglass, faux marble, acrylic and plastics
- * Multiple layers of drywall
- * Plaster and lathe
- * Masonry boards, with or without decorative panels
- * Most wall panels

RES GRAB BAR FASTENING SYSTEM—developed to work with WingIts' Grab Bars.

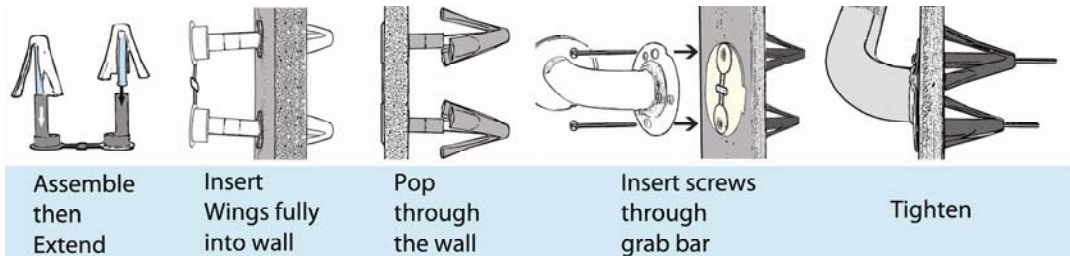
WingIts' offers the most extensive line of the highest quality grab bars in the world.

Flanges on WingIts' Grab Bars have multiple holes as well as two slotted holes to make installation quick and easy.

RES Grab Bar Fastening System installs completely **WATERPROOF**—even over grout lines!

INSTALLATION

Use center hole of TAPE to properly locate the Grab Bar. Adhere tape and drill 3/4" holes as indicated.



NEVER INSTALL ANY FASTENER INTO WET OR DETERIORATING WALLS!

DO NOT INSTALL *WingIts*® into BARE 1/2" drywall when attempting to meet commercial building codes.

LOCATION:

To ensure adequate clearance from wall studs, use a stud finder. Minimum 1" clearance required from centerline of WingIt installation.

TOOLS REQUIRED:

Tape Measure to layout, **3/4" Drill & Phillips Screwdriver**.

The Apache200 was developed to drill through the wall substrates listed above—rated @ 200 holes in ceramic wall tile

