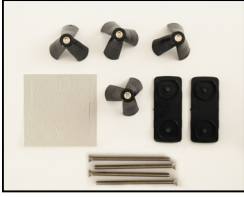


BAW30—Bath Accessory WingIts Installation Guide

Compatible w/ all WingIts' curved Shower Rods and OVAL Bath Accessories



BAW—Contains assemblies for two brackets. Parts for one bracket shown to the left. FACEPLATE, TAPE, SCREWS & WINGS.

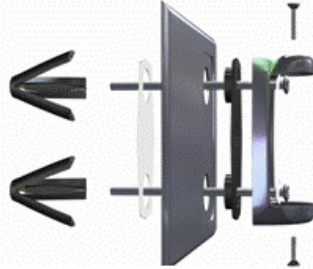


Optional COVER PLATE—covers Existing Installation Holes when installing WingIts' curved Shower Rods

Install ALL curved Shower Rods 3" further into the shower than straight rods.

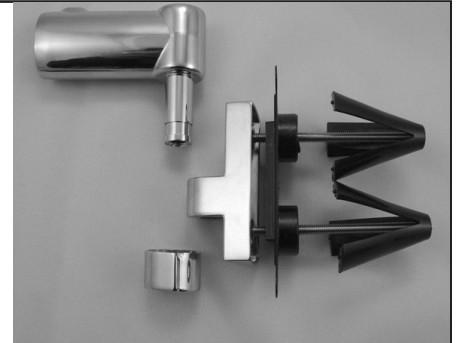
1

ASSEMBLE BAW TO BRACKET



Original Crescent curved Shower Rod Bracket being assembled to the BAW with the waterproof Tape and optional COVER PLATE .

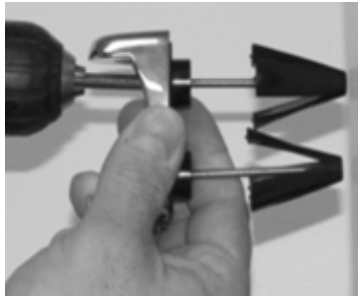
TIP—peel off the small tape liner, adhere to Faceplate then remove the large liner



Superior OVAL Bracket with BAW waterproof TAPE not needed for dry use.

2

INSERT BAW INTO WALL HOLLOW



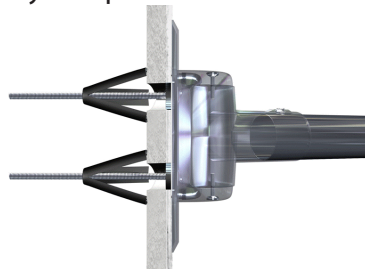
Use screwdriver or cordless drill to push the WINGS through the 3/4" holes. Seat the FACE-PLATE on the wall, then tighten the screws.

TIP—when installing into Ceramic Wall Tile, Marble or Plaster use WingIts' Apache200 Industrial Carbide Drill Bit

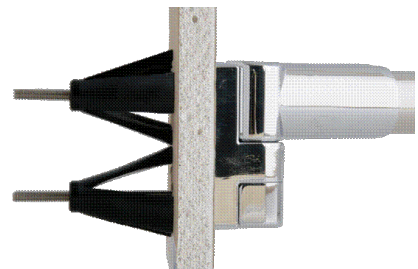
3

TIGHTEN SCREWS AND ASSEMBLE BATH ACCESSORY

Assembly completed:



Original Crescent curved Shower Rod



Superior OVAL Shower rod

Bath Accessory Faceplates (BAWFA)

Use in conjunction with structural blocking.

The Crescent Faceplate is designed to lock into the Crescent Rod Bracket and the wall substrate. Install using the Stainless Steel Screws from the "free hardware pack" to insure the Crescent Rod doesn't SAG. Use waterproof tape (supplied) against wall surface. Compatible with WingIts' Decorative Cover Plate



WingIts stay in CONED position behind the wall substrate—guaranteed to NEVER Loosen