



# WINGITS CURVED SHOWER RODS

THE WORLD'S STRONGEST SHOWER RODS™

SPECIFIED BY THE MAJOR HOTELS THROUGHOUT NORTH AMERICA

INNOVATION and BEAUTY have culminated in our Shower Rods

## SUPERIOR OVAL™ (Oval Tubing) curved SHOWER ROD



- Structure & Beauty - Best of Both Worlds
- World's Strongest curved Shower Rod
- Only curved Rod that cannot ROTATE in its fittings
- Easiest & Fastest curved Shower Rod INSTALLATION!
- Gives up to 25% more room in the tub
- Works seamlessly with All Shower Hooks or HOOKLESS curtains
- Available in Standard Bow or our EXCLUSIVE **Reduced** Bow
- Wingits' Installation Accessories available

Mfg #	Size	Finish
WOCBS5	5' Standard Bow	Bright
WOCNS5	5' Standard Bow	Satin
WOCBS5-6	5' 6" Bow	Bright
WOCNS5-6	5' 6" Bow	Satin

## CRESCENT® (Round Tubing) curved SHOWER ROD



- Available in Standard Bow or our EXCLUSIVE **Reduced** Bow
- Gives up to 25% more room in the tub
- Available in Satin and Bright Finishes
- Custom Sizes Available
- Wingits' Installation Accessories available

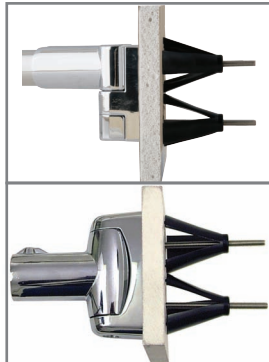
Mfg #	Size	Finish
WCRBS5	5' Standard Bow	Bright
WCRBS5-6	5' 6" Bow	Bright
WCRSS5	5' Standard Bow	Satin
WCRSS5-6	5' 6" Bow	Satin

Use Wingits' Bath Accessory Fastening System for a guaranteed installation of all Wingits' curved Shower Rods into hollow walls.



# curved SHOWER ROD SOLUTIONS

## BATH ACCESSORY WINGIT



- PERMANENT Installation of ALL WingIts' Shower Rods
- NEVER Loosens!
- NEVER Sags!
- Guaranteed Installation
- Works with all OVAL Bath Accessories

**Mfg #**

BAW30

## APACHE200™ DRILL BITS



*Makes Installing WingIts a breeze!*

- Industrial Carbide Drill Bit - Rated @ 200 holes through Ceramic Wall Tile
- Guaranteed to NEVER WALK - Fits standard and cordless drills
- Designed for Ceramic, Marble and Plaster
- Available in 3/4" or 1-1/4" diameter

**Mfg #**

WA200GT34 (3/4"),  
WA200GT54 (1-1/4")

## MATCHING COVER PLATES

- Matching Stainless Steel (Bright or Satin)
- Covers existing holes while properly locating the curved rod
- Matches WingIts' *curved* Shower Rods (Specify Standard or OVAL)

**Mfg #**

OCP-BS  
OCP-SN  
BCSR-CHM  
BCSR-SNM

**Finish**

OVAL Bright  
OVAL Satin  
Standard Bright  
Standard Satin