

# WINGITS®

## MASTER Anchor™ Super Duty Fastener

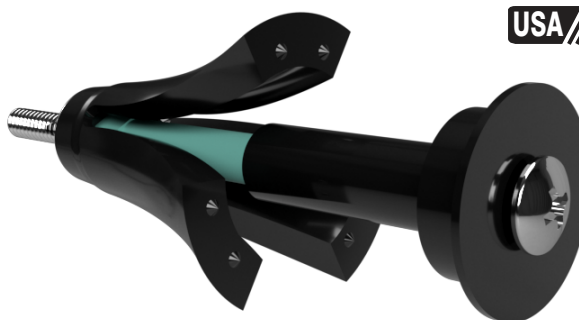
Model:  
**MAWSD**

**Part Numbers:**

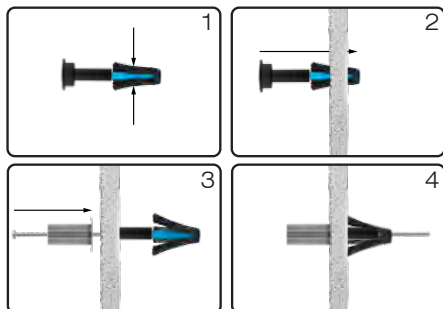
**MAWSD35**

Plastic Anchor with 3.5"  
Stainless Steel Truss Head  
Screw

**World's Strongest Fastener®**



INSTALLATION IS AS EASY AS ...



**Features:**

- Rated up to 300lb (in shear)
- NEVER Loosens
- Water Resistant & Fire Retardant
- Patented Worldwide
- Handles Vector and Vibratory Forces
- #10 Stainless Steel Truss Head Screw for Larger Apertures

**\*\*\*INSTALLING TVs\*\*\* - Only for Low-Profile/Tilting Mounts  
(Not Full Motion Mounts)**

<b>MECHANICAL DATA</b>
Height (face plate): 1" (25mm) Length (face plate): 1" (25mm) Depth: 3.5" (88.9mm)
<b>COMPOSITION</b>
Structural Plastic with 3.5" Stainless Steel Screw
<b>INSTALLATION</b>
WINGITS® MAWSD35 Fasteners are designed for hollow-wall construction for wall substrates up to 1.2" thick.

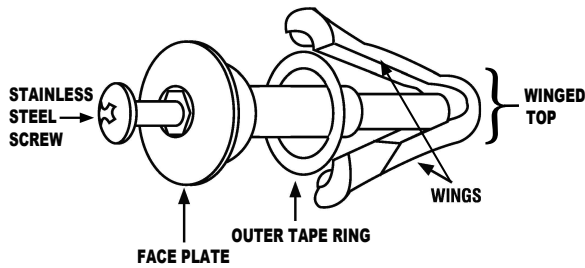


**Industrial Grade Carbide Drill Bit**

- MAWSDOS35 installs quickly and easily with the APACHE200 (WA200GT34)
- Drills holes through ceramic wall tiles in seconds - use cordless drill
- Designed for ceramic, marble & plaster

# Installation Instructions

## MAWSD35

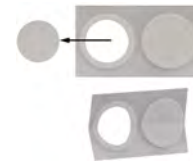


**Note - Strength is in Shear**

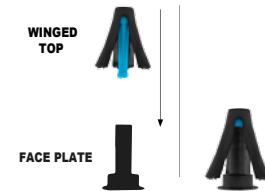
Strength and stability are greatly affected by projection off—and length of interaction with—the wall surface. For guidance, call us at 877.894.6448. WINGITS® are designed to be used in vertical walls only.

**DO NOT USE IN CEILINGS.**

1. For watertight application remove OUTER RINGS and stick onto FACE PLATES



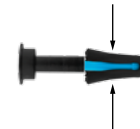
2. Find flat, secure surface. Using your palm, "pop" WINGED TOP into FACE PLATE



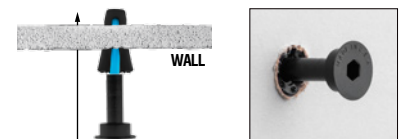
3. Extend WINGIT to full length



4. Compress WINGS and insert WINGIT such that wing tips appear flush with wall surface



5. "Pop" WINGIT through wall



6. Secure WINGIT and Accessory with the enclosed 3.5" Stainless Steel Screw

