

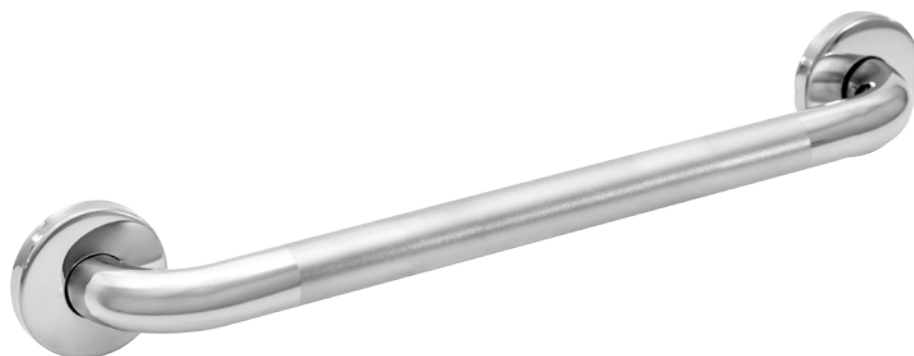
# WINGITS®

## Standard Stainless Steel Grab Bar - Peened

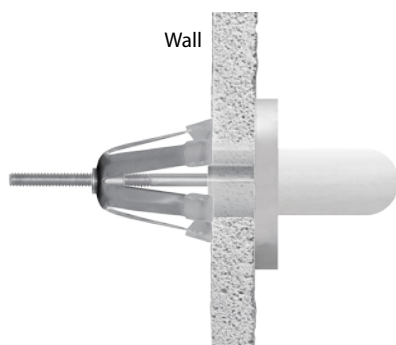
### Model: WGB5PE

#### Part Numbers:

<b>WGB5PSPE12</b> 12" Polished Finish	<b>WGB5SSPE12</b> 12" Satin Finish
<b>WGB5PSPE16</b> 16" Polished Finish	<b>WGB5SSPE16</b> 16" Satin Finish
<b>WGB5PSPE18</b> 18" Polished Finish	<b>WGB5SSPE18</b> 18" Satin Finish
<b>WGB5PSPE24</b> 24" Polished Finish	<b>WGB5SSPE24</b> 24" Satin Finish
<b>WGB5PSPE30</b> 30" Polished Finish	<b>WGB5SSPE30</b> 30" Satin Finish
<b>WGB5PSPE32</b> 32" Polished Finish	<b>WGB5SSPE32</b> 32" Satin Finish
<b>WGB5PSPE36</b> 36" Polished Finish	<b>WGB5SSPE36</b> 36" Satin Finish
<b>WGB5PSPE42</b> 42" Polished Finish	<b>WGB5SSPE42</b> 42" Satin Finish
<b>WGB5PSPE48</b> 48" Polished Finish	<b>WGB5SSPE48</b> 48" Satin Finish

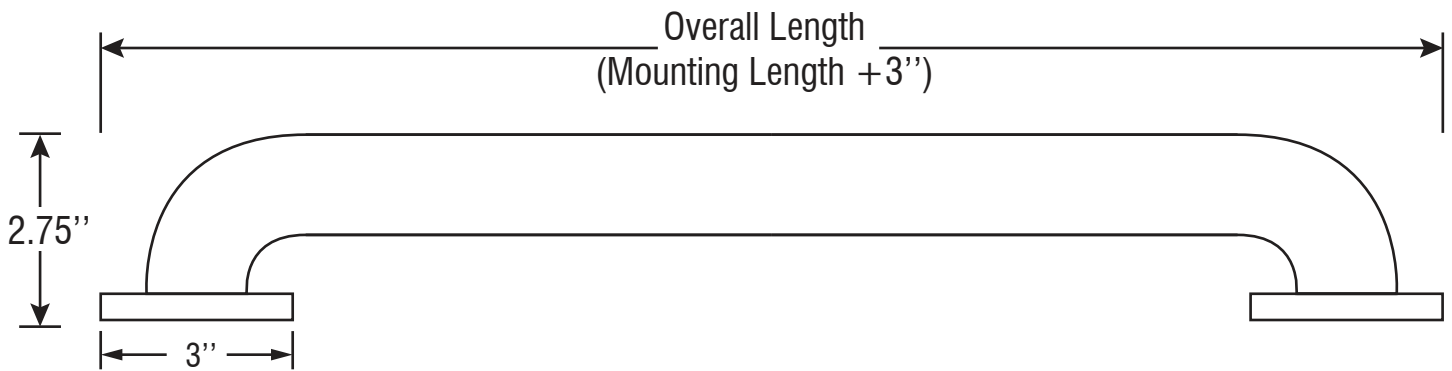
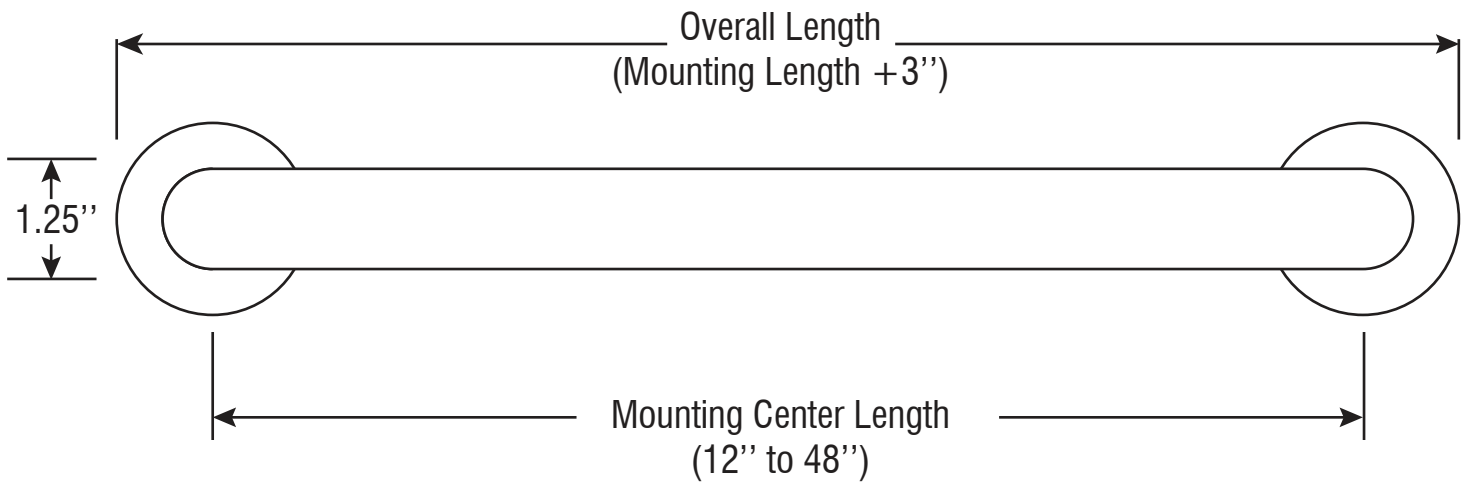


- All parts are Stainless Steel - tubing is 18-gauge (1.2mm)
- Mounting Flanges are 3" (75mm) in diameter, 3/32" (2.5mm) thick, HeliArc welded to the tubing. Mounting Flanges have 5 holes for attachment to WINGITS or adequate blocking.
- Snap-On Flange Covers are 22 gauge (0.8mm) drawn stainless steel, 3" (76mm) in diameter and 3/8" (10mm) in height.
- Provide 1-1/2" (38mm) clearance from wall.
- Anti-Slip Grab Bar



<b>MECHANICAL DATA</b>
<b>Width:</b> See product part number for width. Complete length of Grab Bar is usable surface. <b>Diameter:</b> 1.25" (3.2cm)
<b>PRODUCT COMPOSITION</b>
Entire product is stainless steel.
<b>MODALITY</b>
<b>Use:</b> Wall Installation. <b>Load Capability:</b> 800 lbs (362.9kg)
<b>INSTALLATION</b>
<b>WINGITS®</b> Structural Stainless Steel Grab Bars are designed to hold live loads and <b>must be installed into adequate structural blocking</b> or with <b>WINGITS®</b> Grab Bar Fasteners
<b>CERTIFICATIONS</b>
<b>WINGITS®</b> Structural Stainless Steel Grab Bars meet or exceed the applicable requirements of all building codes, ADA criteria, and 2010 ADAAG and 2009 ANSI standards.
<b>RECOMMENDED INTEGRATION</b>
For hollow wall construction, it is recommended that <b>WINGITS®</b> Grab Bar Fasteners are used with this product. See Fastener instructions for applications.

# WINGITS®



Holes - 1/4"  
Slots - 1/4" x 1/2"  
(used when installing with  
the WINGITS® Grab Bar  
Fastening System)

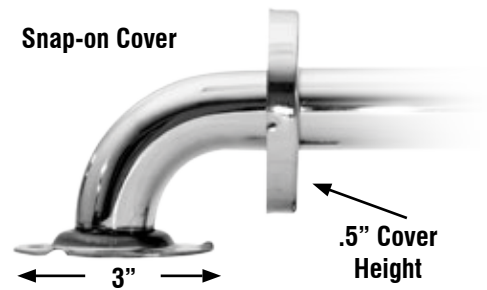
Bolt Circle is 2.3125"

Grab Bar  
Mounting Flange

Grab Bar Tube



Snap-on Cover



## INCLUDED HARDWARE



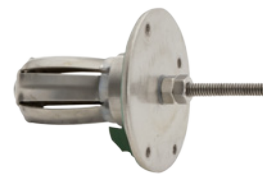
Stainless Steel Screws x 6

## OPTIONAL HARDWARE

(Sold Separately)



Grab Bar Wingits (GBW40) x 2



Reverse Grab Bar Wingits (SRGBW40) x 2



RES Wingits (RESGBW35) x 2