

WINGITS® INFINITE Squared™

Square Flange Double Horizontal Toilet Paper Holder

Models:

WITSQDHTPH

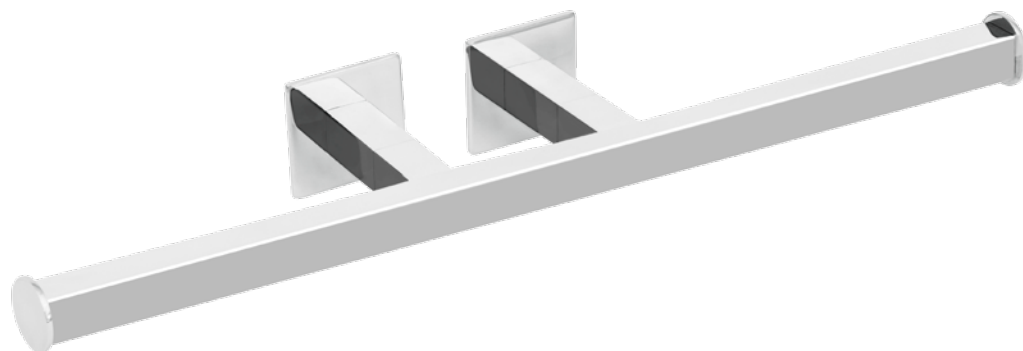
Part Numbers:

WITSQDHTPHPS

Polished Finish

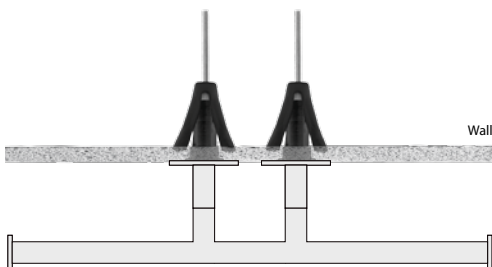
WITSQDHTPHSN

Satin Finish



Contemporary design combines with a fully HeliArc welded construction, resulting in a Toilet Paper Holder with:

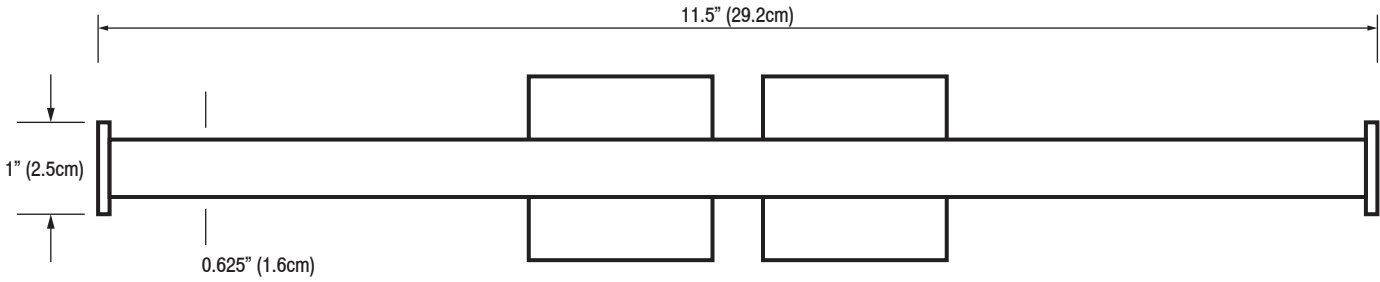
- Structural Stainless Steel
- Beauty-Functionality-Durability
- No lines for dirt to collect - maintenance free
- Unparalleled strength



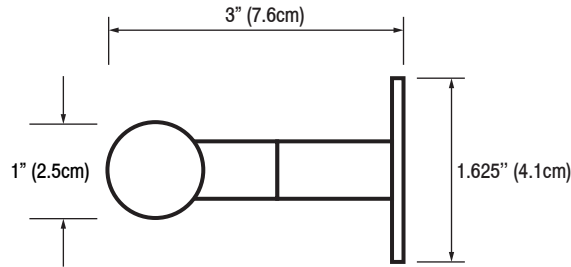
MECHANICAL DATA
Height: 1.625" (4.1275cm)
Length: 11.5" (29.2cm)
Projection: 3" (7.6cm)
PRODUCT COMPOSITION
Entire product is 18/8 (304) stainless steel. Caps and pins are HeliArc welded to 18 gauge tube.
MODALITY
Use: Must be used in horizontal position.
INSTALLATION
Install WingIts ® INFINITE Squared™ Double Horizontal Toilet Paper Holders into adequate structural blocking (included S/S screws) or into hollow walls with WingIts ® MASTER Anchor™ Fastener (MAW35).
RECOMMENDED INTEGRATION
It is recommended that WingIts ® MASTER Anchor™ (MAW35) is used with this product.

WINGITS®

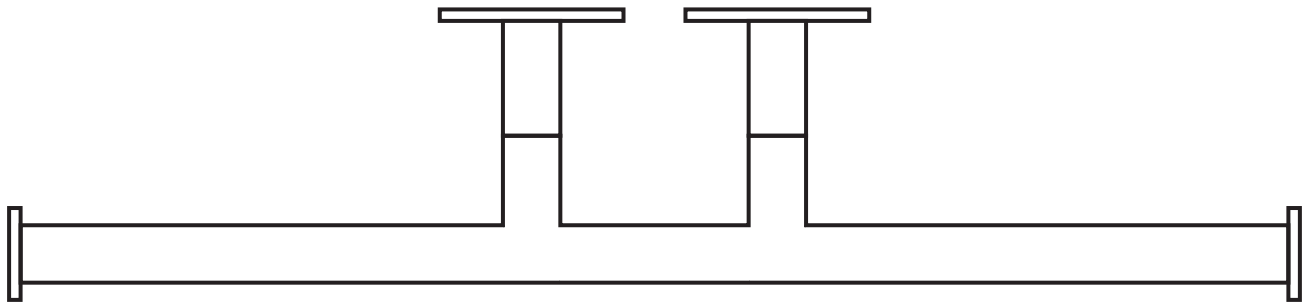
FRONT



SIDE



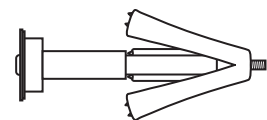
TOP



INCLUDED HARDWARE



OPTIONAL HARDWARE (Sold Separately)



Wingits® MASTER Anchor™ INFINITE Squared™
Bath Accessories (MAW35) x 2