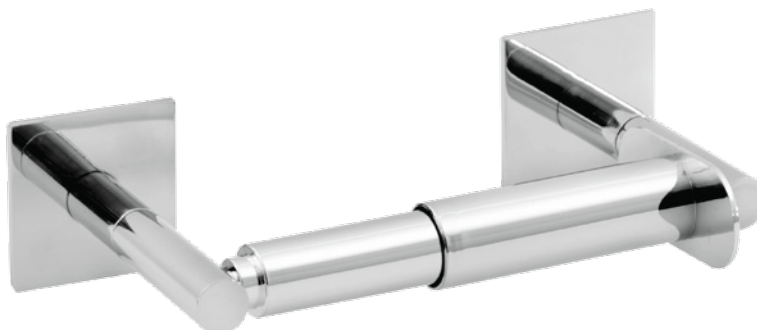


# WINGITS® MODERN Transitional™

## Single Toilet Paper Holder

**Model:**  
**WMTTPH**

**Part Numbers:**  
**WMTTPHS** Polished Finish  
**WMTTPHSN** Satin Finish



Contemporary design combines with **PATENTED** BridgeBind™ Technology resulting in a Toilet Paper Holder with:

- Solid Stainless Steel Ring
- Beauty-Functionality-Durability
- No lines for dirt to collect - maintenance free
- Unparalleled strength

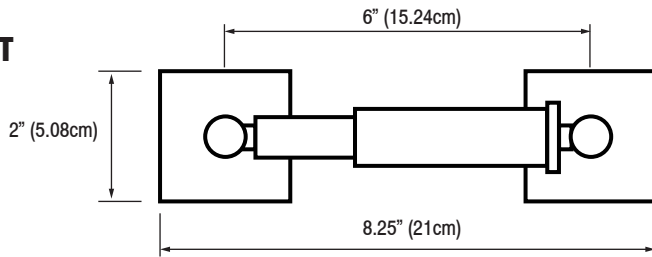
BridgeBind™ Technology is the result of drilling a hole completely through stainless steel tubing, inserting a solid stainless steel pin, and HeliArc welding the pin to the far point of the tube; solidifying the pin and tube into one piece. Creating the ultimate structural bond.

<b>MECHANICAL DATA</b>
<p><b>Height:</b> 2" (5.08cm)  <b>Length:</b> 8.25" (21cm)  <b>Projection:</b> 3.625" (9.2cm)</p>
<b>PRODUCT COMPOSITION</b>
<p>Product consists of 18/8 (304) Stainless Steel stand-offs with polished plastic spring loaded retractable tubing.</p>
<b>MODALITY</b>
<p><b>Use:</b> Wall Installation.</p>
<b>INSTALLATION</b>
<p><b>WingIts®</b> MODERN Transitional™ Toilet Paper Holders are designed to be <b>installed into adequate structural blocking</b> or with <b>WingIts®</b> MASTER Anchor™ Fasteners for MODERN Transitional™ Bath Accessories (MAW35).</p>
<b>RECOMMENDED INTEGRATION</b>
<p>For the strongest possible installation, it is recommended that <b>WingIts®</b> MASTER Anchor™ for MODERN Transitional™ Bath Accessories (MAW35) is used with this product.</p>

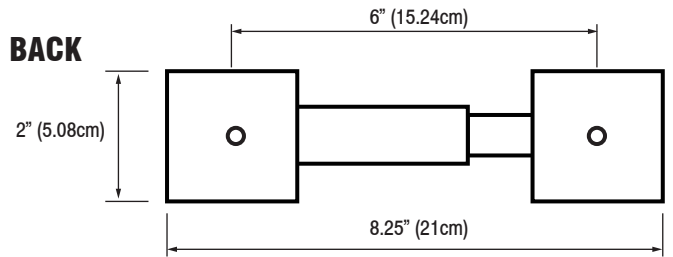
WMTTPH(PS)(SN)\_SpecSheet\_20141104

# WINGITS®

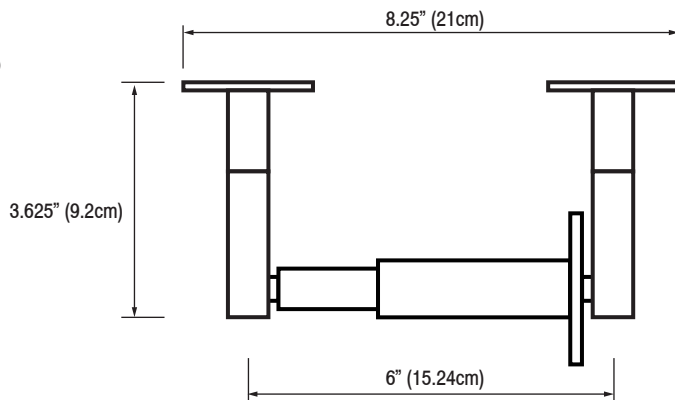
**FRONT**



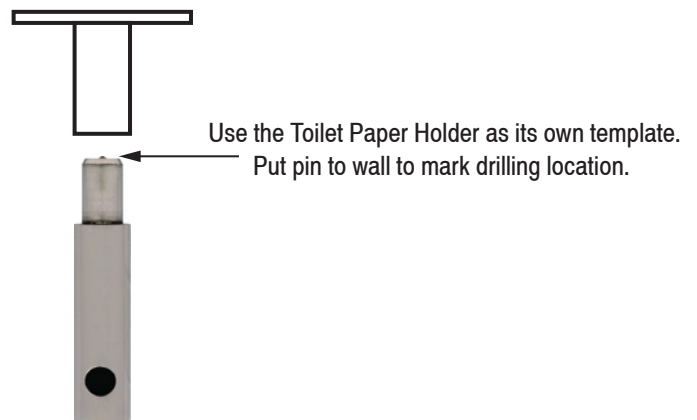
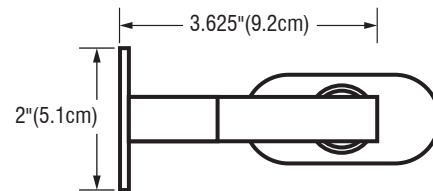
**BACK**



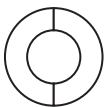
**TOP**



**SIDE**



**INCLUDED HARDWARE**



3M® Waterproof ME Tape x 2



Allen Wrench x 1



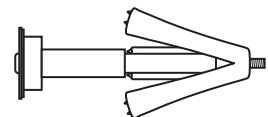
S/S Screw for Blocking x 2



Set Screw x 2

**OPTIONAL HARDWARE**

(Sold Separately)



Wingits® MASTER Anchor™ for MODERN Transitional™ Bath Accessories (MAW35) x 2