

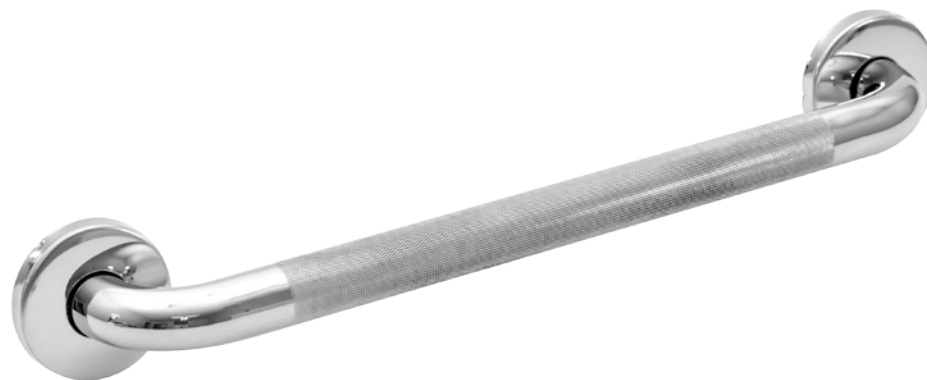
WINGITS® STANDARD

Stainless Steel Grab Bar - Diamond Knurled

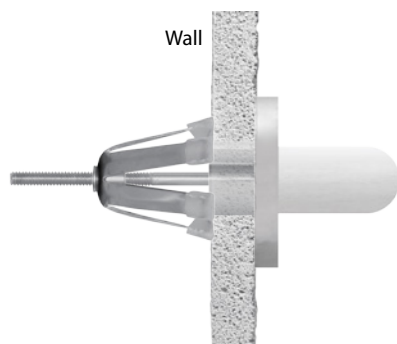
Model:
WGB5KN

Part Numbers:

WGB5PSKN12 12" Polished Finish	WGB5SSKN12 12" Satin Finish
WGB5PSKN16 16" Polished Finish	WGB5SSKN16 16" Satin Finish
WGB5PSKN18 18" Polished Finish	WGB5SSKN18 18" Satin Finish
WGB5PSKN24 24" Polished Finish	WGB5SSKN24 24" Satin Finish
WGB5PSKN30 30" Polished Finish	WGB5SSKN30 30" Satin Finish
WGB5PSKN32 32" Polished Finish	WGB5SSKN32 32" Satin Finish
WGB5PSKN36 36" Polished Finish	WGB5SSKN36 36" Satin Finish
WGB5PSKN42 42" Polished Finish	WGB5SSKN42 42" Satin Finish
WGB5PSKN48 48" Polished Finish	WGB5SSKN48 48" Satin Finish

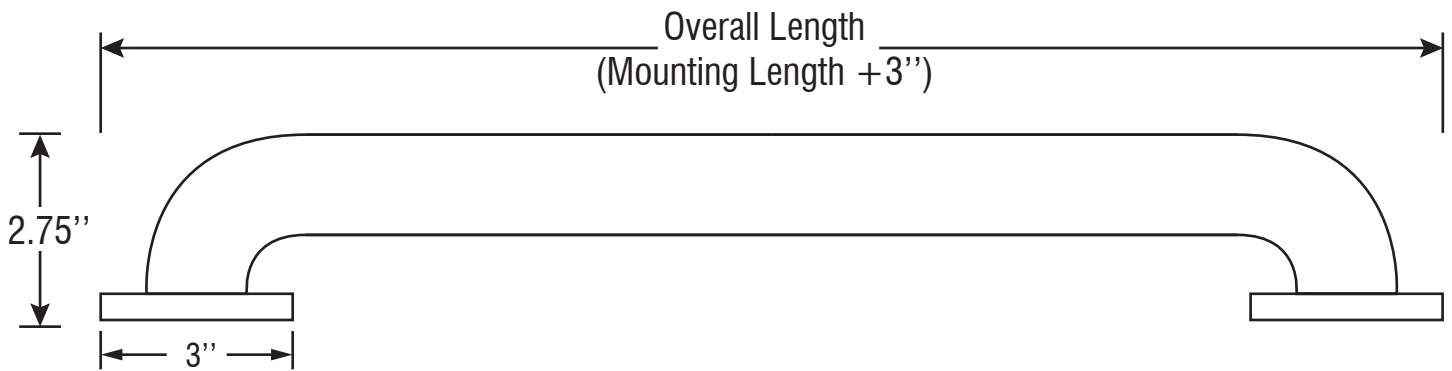
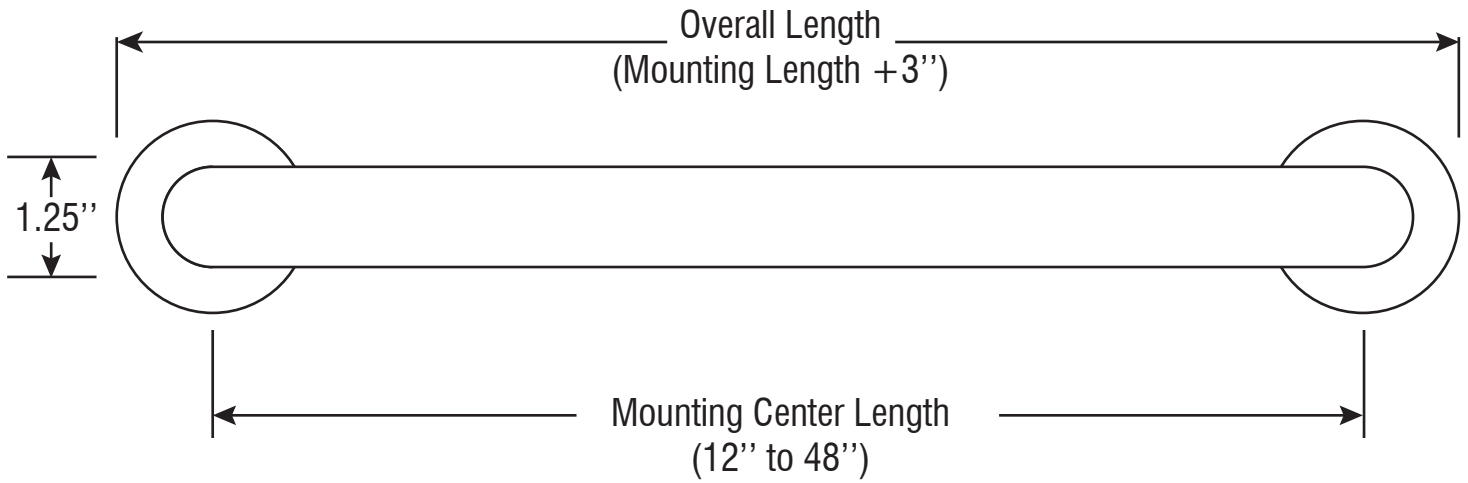


- All parts are Stainless Steel - tubing is 18-gauge (1.2mm)
- Mounting Flanges are 3" (75mm) in diameter, 3/32" (2.5mm) thick, HeliArc welded to the tubing. Mounting Flanges have 5 holes for attachment to WINGITS or adequate blocking.
- Snap-On Flange Covers are 22 gauge (0.8mm) drawn stainless steel, 3" (76mm) in diameter and 3/8" (10mm) in height.
- Provide 1-1/2" (38mm) clearance from wall.
- Anti-Slip Grab Bar that repels dirt and bacteria



MECHANICAL DATA
Width: See product part number for width. Complete length of Grab Bar is usable surface. Diameter: 1.25" (3.2cm)
PRODUCT COMPOSITION
Entire product is stainless steel.
MODALITY
Use: Wall Installation. Load Capability: 800 lbs (362.9kg)
INSTALLATION
WingIts® STANDARD Structural Stainless Steel Grab Bars are designed to hold live loads and must be installed into adequate structural blocking or with WingIts® Grab Bar Fasteners
CERTIFICATIONS
WingIts® STANDARD Structural Stainless Steel Grab Bars meet or exceed the applicable requirements of all building codes, ADA criteria, and 2010 ADAAG and 2009 ANSI standards.
RECOMMENDED INTEGRATION
For hollow wall construction, it is recommended that WingIts® Grab Bar Fasteners are used with this product. See Fastener instructions for applications.

WINGITS®



Holes - 1/4"
Slots - 1/4" x 1/2"
(used when installing with
the WINGITS® Grab Bar
Fastening System)

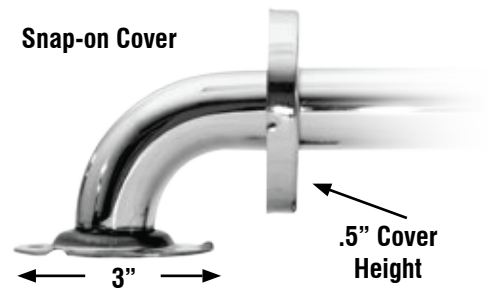
Bolt Circle is 2.3125"

Grab Bar
Mounting Flange

Grab Bar Tube



Snap-on Cover



INCLUDED HARDWARE



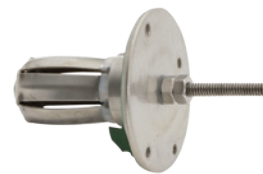
Stainless Steel Screws x 6

OPTIONAL HARDWARE

(Sold Separately)



Grab Bar Wingits (GBW40) x 2



Reverse Grab Bar Wingits (SRGBW40) x 2



RES Wingits (RESGBW35) x 2