

WINGITS®

PURE Elegance™

Left L-Shaped Shower Seat

Model:
PUEX

Part Numbers:

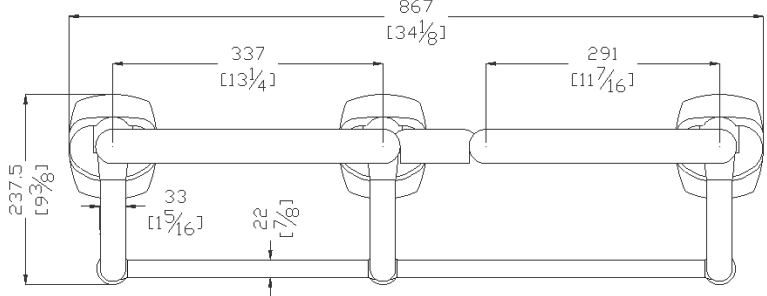
PUEX32LHBLK
32" x 22.5" Shower Seat
Black Finish



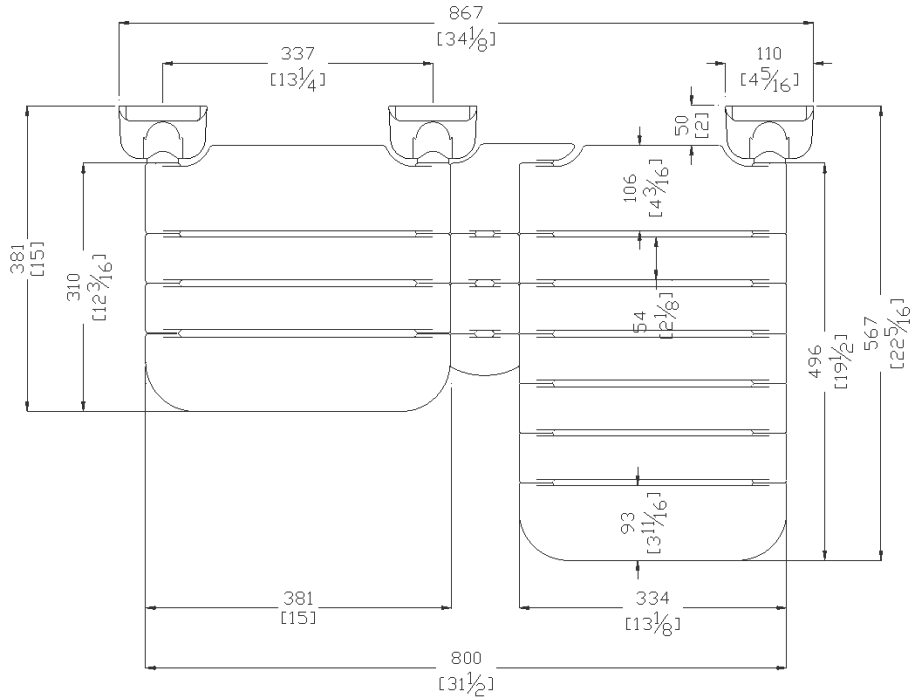
- Exceeds minimum 250 lbs. load requirement per the 2010 ADAAG and 2017 ANSI Standards
- Beautifully designed and warm to the touch
- Heavy Nylon Antimicrobial Sheath Exterior with Directional Slats
- Folds up neatly after use
- Stainless Steel Mount Plate and Hinge
- Rated up to 450 lb

MECHANICAL DATA	
Height: 9.3" (23.6cm)	
Length: 32" (81.3cm)	
Projection: 22.5" (57.2cm)	
PRODUCT COMPOSITION	
2.5mm vinyl 78ShA coating Ø33 extrusion. Seat stave is polyamide 6 (PA6). Hose support is steel (FE360/Sched 40).	
MODALITY	
Use: Wall Installation.	Load Capability: 450 lbs. (204kg)
INSTALLATION	
WINGITS® Folding Shower Seats are designed to hold live loads and must be installed into Adequate Structural Blocking.	
RECOMMENDED INTEGRATION	
Installation into Adequate Structural Blocking is required.	

FRONT



TOP



SIDE

