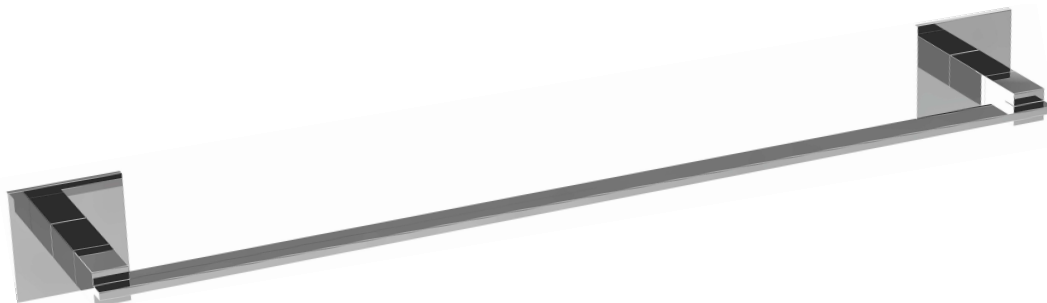


WINGITS® LINEAR Transitional™ Stainless Steel Towel Bar

Model:
WLTTB

Part Numbers:

- | | |
|---|--------------------------------------|
| WLTTBPS18
18" Polished Finish | WLTTBSN18
18" Satin Finish |
| WLTTBPS24
24" Polished Finish | WLTTBSN24
24" Satin Finish |
| WLTTBPS30
30" Polished Finish | WLTTBSN30
30" Satin Finish |

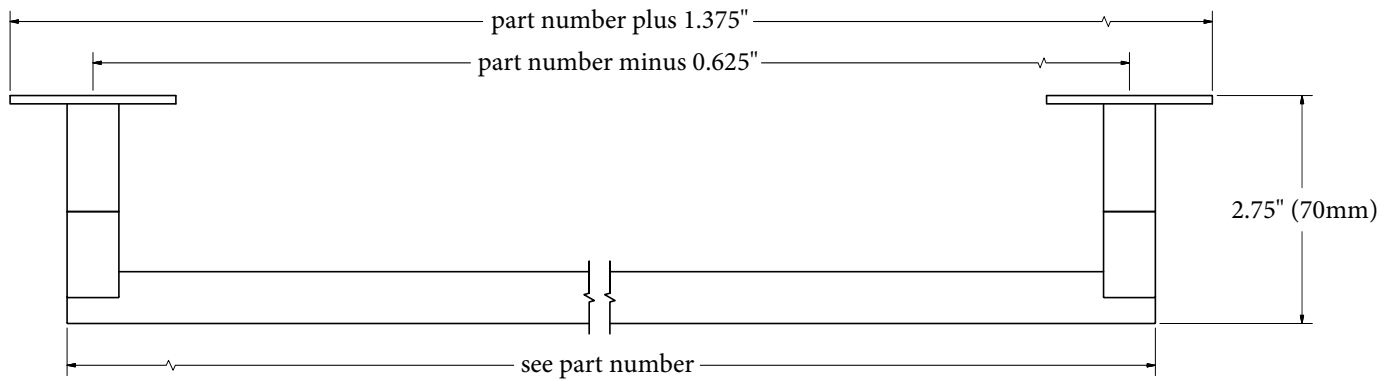


Features:

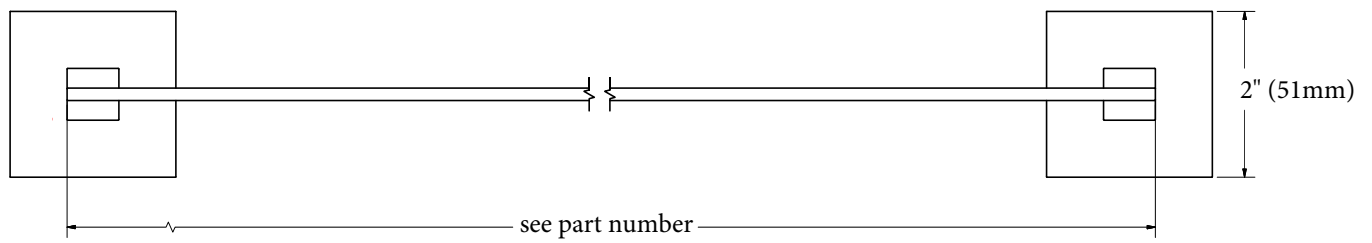
- Stainless Steel Carved, Welded & Polished
- Structured Towel Bar
- LINEAR Design - Ultimate Durability & Low Maintenance

MECHANICAL DATA
Length: see part number Height: 2" (51mm) Depth: 2.75" (70mm)
COMPOSITION
18-8 (304) Stainless Steel
INSTALLATION
Includes Stainless Steel Screws to Install into Adequate Structural Blocking . Includes 3M® VHB Waterproof Tape. Can Be Installed with WINGITS® Fasteners when blocking is not available.
RECOMMENDED INTEGRATION
Install into Adequate Structural Blocking or with WINGITS® Fasteners. WINGITS® LINEAR™ design is available in all Bath Accessories.

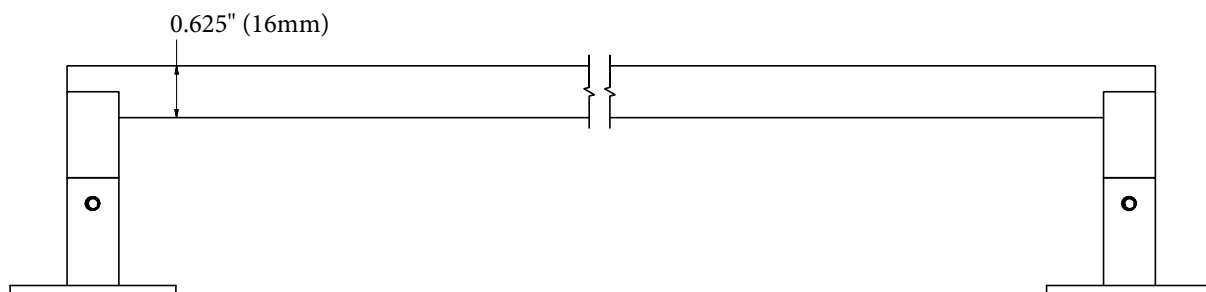
Top



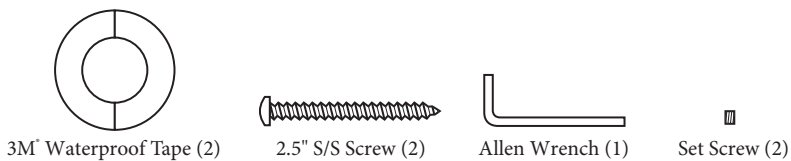
Front



Bottom



INCLUDED HARDWARE



OPTIONAL HARDWARE
(Sold Separately)

