

# WINGITS®

## Recessed Double Toilet Paper Holders

Model:  
**WRDTPH**

**Part Numbers:**

**WRDTPHPS**  
Polished Finish

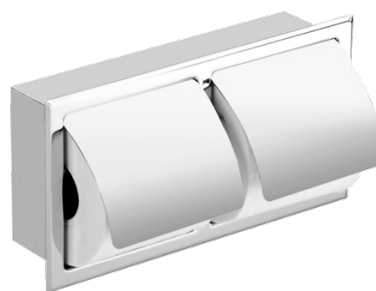
**WRDTPHSN**  
Satin Finish

**WRDTPHPSH**  
Polished Finish  
with Hoods

**WRDTPHSNH**  
Satin Finish  
with Hoods



Exposed

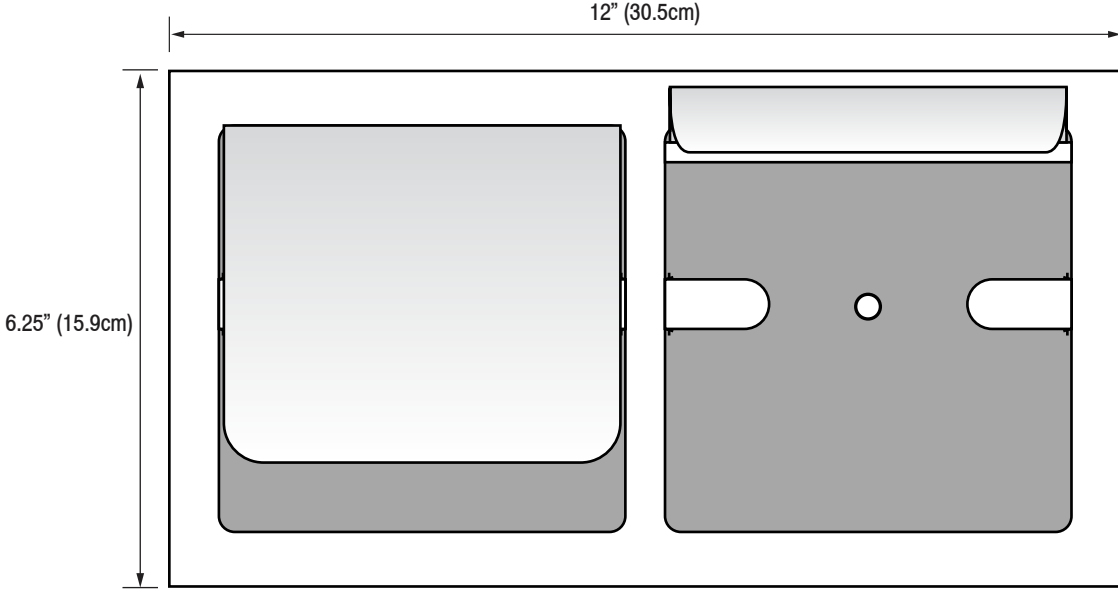


With Hoods

- Made of Stainless Steel
- The recessed toilet paper holder allows for more room in bathrooms
- Available in high polished mirror or satin finishes - complements any bathroom style
- Functionality - durability - maintenance free
- Clean flowing lines through minimalist design

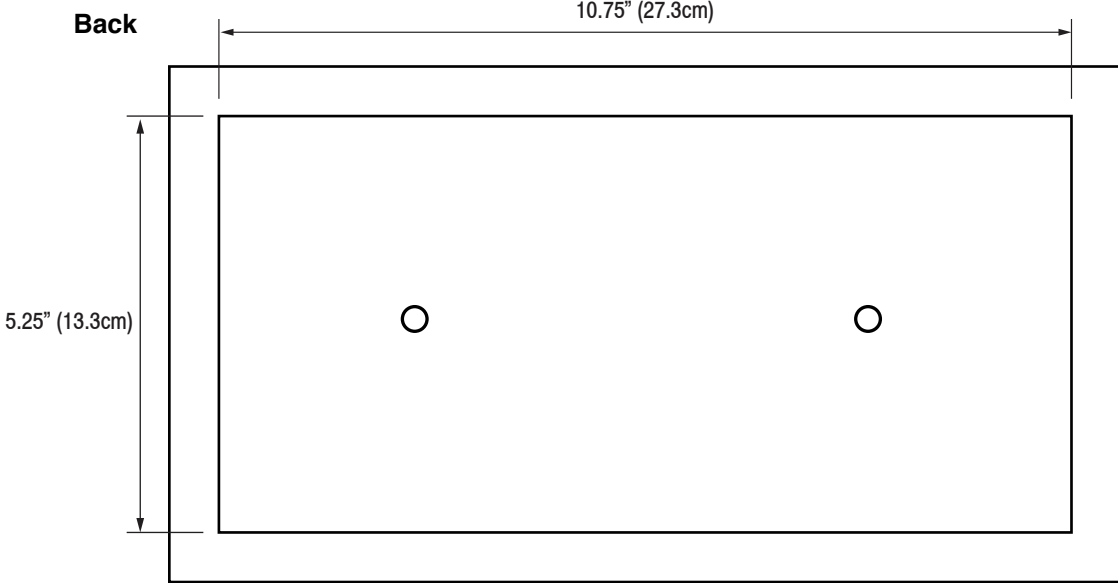
<b>MECHANICAL DATA</b>
Length: 12" (305mm) Height: 6.25" (159mm) Depth: 0.125" (3mm)
<b>COMPOSITION</b>
Stainless Steel with Spring-loaded retractable spindle
<b>MODALITY</b>
Use: Hollow Wall Installation
<b>INSTALLATION</b>
WINGITS® Recessed Toilet Paper Holders are designed to be installed into hollow-wall construction

Front

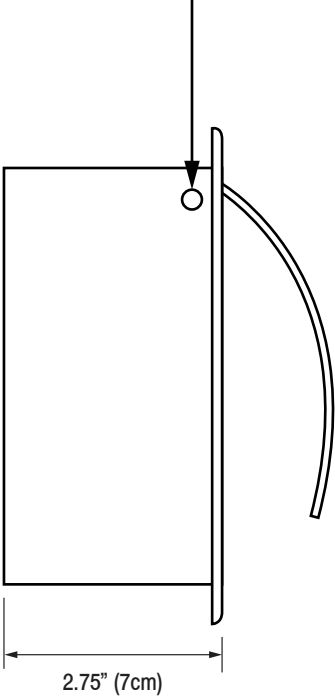


**NOTE:** For Exposed Toilet Paper remove set screws and hoods.

Back



Side



Top

