

WINGITS®

CONTOUR™

14" Glass Shelf

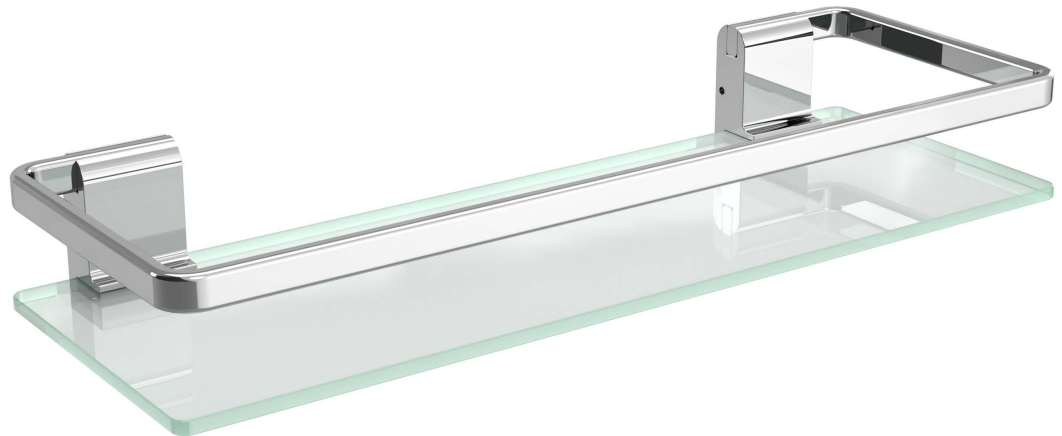
Model:

WRIGS14

Part Numbers:

WRIGS14PS
14" Polished Finish

WRIGS14SN
14" Satin Finish

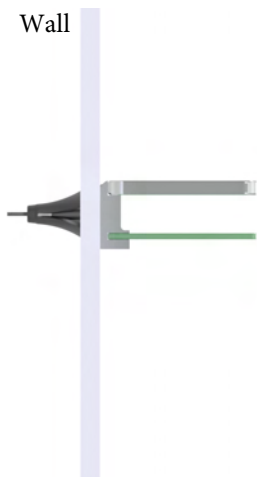


Includes World's
Strongest Fastener®



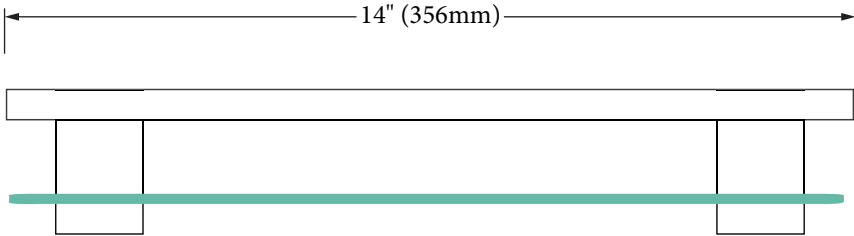
Features:

- Hand Polished Stainless Steel
- Beauty, Functionality & Durability
- Tempered Glass Shelf

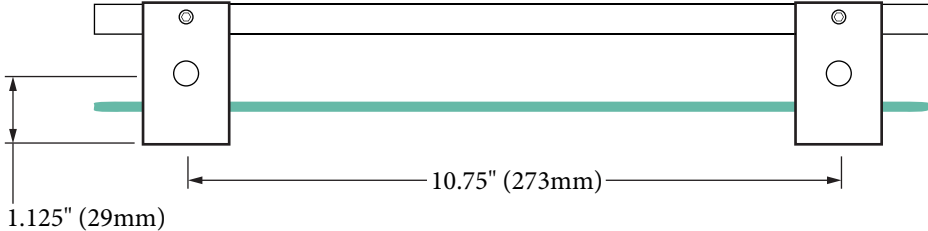


MECHANICAL DATA
Length: 14" (356mm)
Height: 2" (51mm)
Depth: 5" (127mm)
COMPOSITION
18-8 (304) Stainless Steel
INSTALLATION
Includes WINGITS® Fasteners for hollow-wall construction. Includes 3M® VHB Waterproof Tape.
RECOMMENDED INTEGRATION
Install with WINGITS® Fasteners (included) for Structural Waterproof Installation into hollow walls. WINGITS® CONTOUR™ shelves have a complete line of matching Bath Accessories.

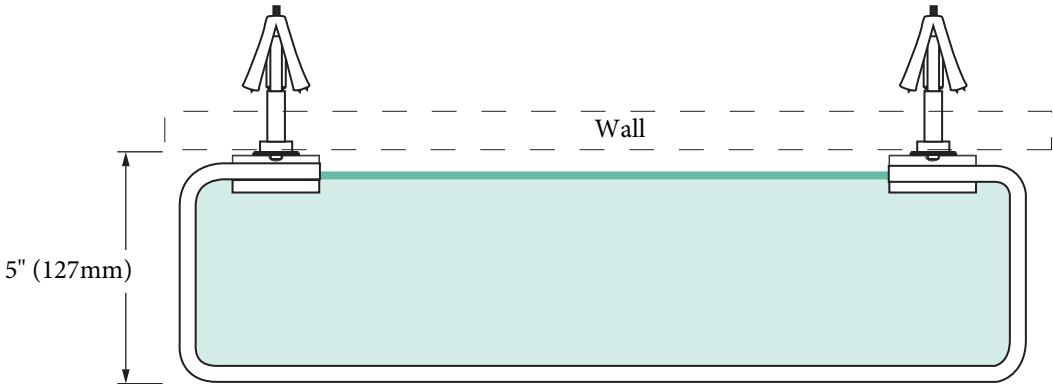
Front



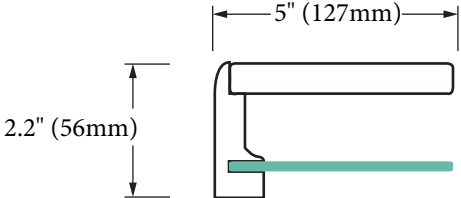
Back



Top



Side



Included Hardware

